

CapX2020



Delivering electricity you can rely on



**South Dakota Wind Energy Association
Terry Grove / CapX2020**

December 1, 2009

Future of Transmission

- “Constructing needed transmission facilities will require entities to more than double the average number of transmission-miles constructed over any five-year period since 1990.”
 - *NERC’s 2009 Long-Term Reliability Assessment*

Times have changed...
or have they?

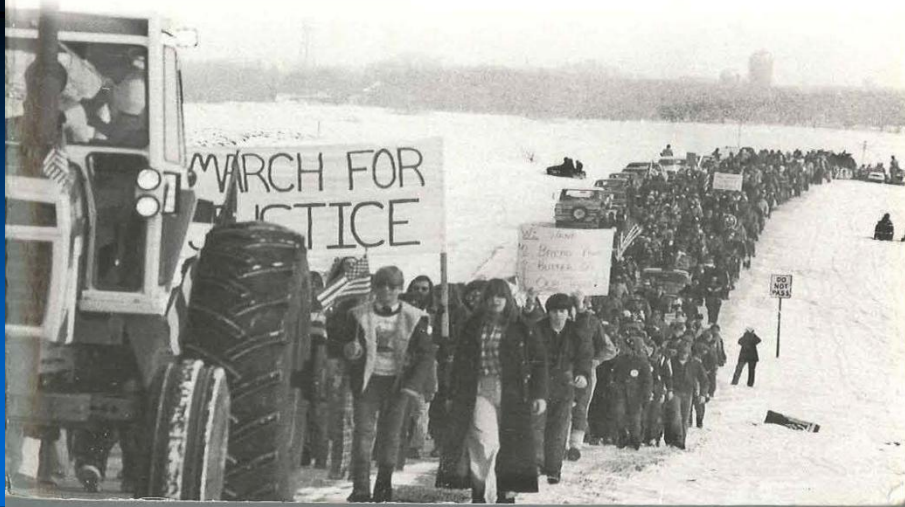
Minnesota – 1970s

Powerline

The First Battle of America's Energy War

PAUL WELLSTONE and BARRY M. CASPER

Foreword by Senator Tom Harkin



- 400 kV DC line
- Energy is not for us
- Health concerns
- Ducks vs. people
- Greed
- Landowners weren't notified

California – 2009



TANC
GREEN ENERGY
or
STIMULUS MONEY GRAB
VIA
LINES of DESTRUCTION
?



SHASTA • TEHAMA COUNTY SUPPORT

THIS SITE IS NOW DEDICATED TO THOSE COMMUNITIES THAT FACE A POWERLINE ATTACK. IT WILL REMAIN A GUIDE TO STRATEGY IN YOUR FIGHT. WE SHALL POST OUR CORE GROUP RECOMMENDATIONS AND SUMMARY ATTITUDE AND STRATEGY. I WOULD ESTIMATE THAT WILL BE AVAILABLE BY OCTOBER 1ST, 2009. THE TEXT BELOW IS THE ORIGINAL WEBSITE (AND THE GREY MENU BAR TO THE LEFT) AS IT REMAINS FROZEN THE DAY TANC DIED.

The very first point is: IS TANC committing fraud? SMUD, REU/Redding and the other members of TANC are by now well aware they mis-represented the RETI REPORT, but that they also tried to change that report and now ignore it.

We will get to that down the page...lets begin with....

A BETTER WAY:

Virtually all of the electricity we produce and consume in America originates from a centralized electricity infrastructure. Utility or generation facilities like coal, nuclear, hydro, and natural gas, are remotely located. Expensive and dangerous transmission lines are used to move the power into the urban centers where it is most needed. This is a very outdated approach based on 19th century technology.

- 500 kV line
- No notification of local governments
- Health concerns
- Loss of property values
- No local benefit
- Prime farmland from production

CapX2020 has effective formula

- **Successfully permitting and siting at state level**
- **Serving customers' reliability needs and growth**
- **Enabling regional renewable energy**
- **Actively engaging the public**
- **Studying future opportunities**

Who are the CapX2020 utilities?

- **11 electric cooperatives, municipal and investor-owned utilities**
 - **Serving nearly 5.5 million residential, commercial and industrial customers for decades**
 - **42,000+ miles of transmission lines**
 - **4,100 megawatts of wind on systems**
 - **99.9 percent reliability of 345-kV transmission system**
- **CapX2020 utilities are national leaders in developing renewable energy resources**

Group 1 projects resulted from Vision plan

Build a solid foundation



Nearly 700 miles and \$1.7 billion
Upsizing adds about \$200 million

Fargo – St. Cloud – Monticello	250-miles, 345-kV
Brookings County – Hampton	240-miles, 345-kV
Hampton – Rochester – La Crosse	150-miles, 345-kV
Bemidji – Grand Rapids	70-miles, 230-kV

- Alleviates emerging community service reliability concerns around the state
- Critical foundation for future transmission and generation
- Provide needed transmission capacity to support new generation outlet
- In-service dates from 2011-2015

Group 1 projects regulatory phase

- **345-kV projects**
 - April 2009: MN PUC unanimously approved Certificate of Need
 - Minnesota Route Permits (final one in January 2010)
 - 2010: regulatory permits to be filed in North and South Dakota and Wisconsin
- **230-kV project**
 - July 2009: MN PUC unanimously approved Certificate of Need permit
 - Spring 2010: Route Permit decision expected
- **Federal agency reviews ongoing**



CapX2020 Utilities

Committed to Public Participation

- **2007 communication and public outreach**
 - 100+ meetings with local governments, civic groups, media
 - Mailings to 73,000 landowners, 500 local officials
- **2008**
 - 130 public meetings
 - 275,000 direct mail pieces; 225 newspaper ads
- **2009**
 - 65+ public meetings
 - 210,000 direct mail pieces; 93 newspaper ads

The Path to Export Overlay

Transmission policy evolving



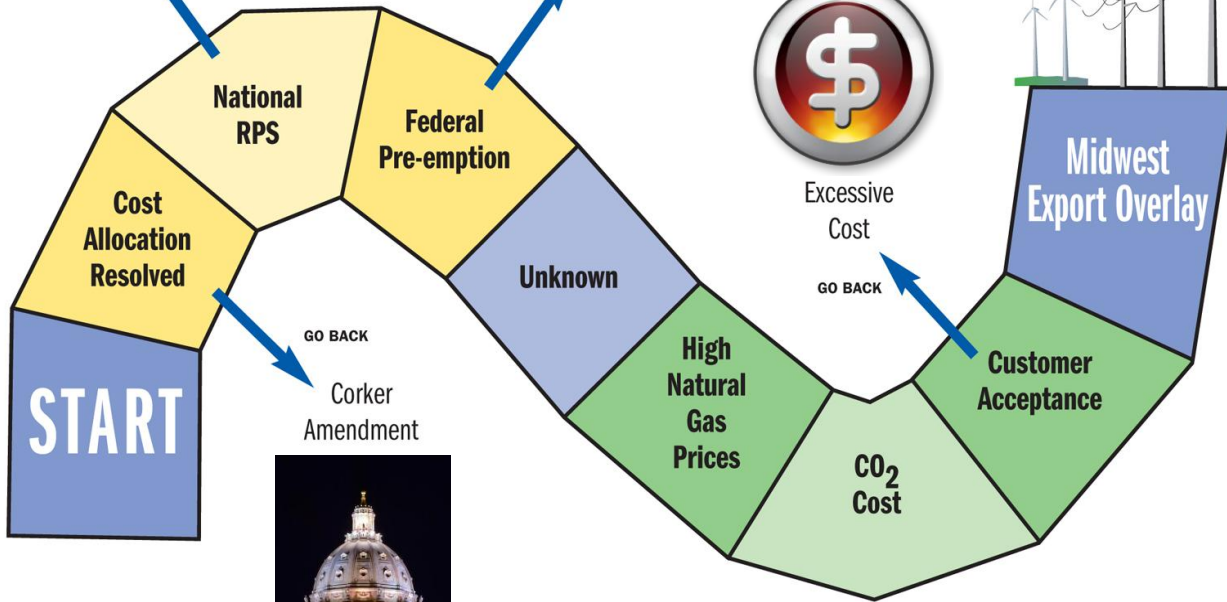
Great Plains
Renewables
Unacceptable

GO BACK



State
Opposition

GO BACK

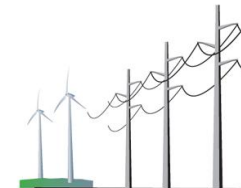


Excessive
Cost

GO BACK



Corker
Amendment



Midwest
Export Overlay

Upper Midwest future

Staged development targets wind-rich areas



- Transmission studies identify opportunities
 - MN RES
 - Manitoba Hydro TSR
 - GPE
 - Western WI Reliability
- In-service time dependent upon RES targets and resource plans
- Actual expansion will reflect integrated system needs and regional/national energy policies

CapX2020 – Focused on regional transmission development

- Committed to “customer” needs and affordability
- Collaborating for open and transparent planning, development and ownership
- Actively engaging public, regulators, local and state officials
- Successfully permitting the largest multi-state upgrades in country
- Prepared to execute whatever transmission is needed to meet need
- Proactive and prudent

Public support: No guarantee



Thank you

www.capx2020.com