

# SDSU Wind Application Center

“Promote Wind Energy Through  
Project Development and Education.”

SD Wind Application Center (WAC)  
Wind for Schools (WFS)



**NREL**

**National Renewable Energy Laboratory**

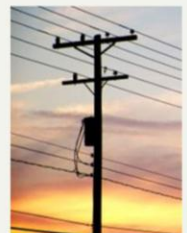
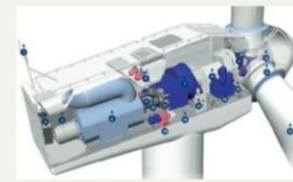
*Innovation for Our Energy Future*

*South Dakota*  
**Public Utilities Commission**

# Matt Hein

- **Graduate Research Assistant**
  - SD WAC, SDSU
  - SDSU EAL
- **Graduate Teaching Assistant**
  - Thermo-Fluids
  - Renewable Energy Systems
- **Wind + Biomass Gasification Research**
- **Webmaster**
  - SDWEA

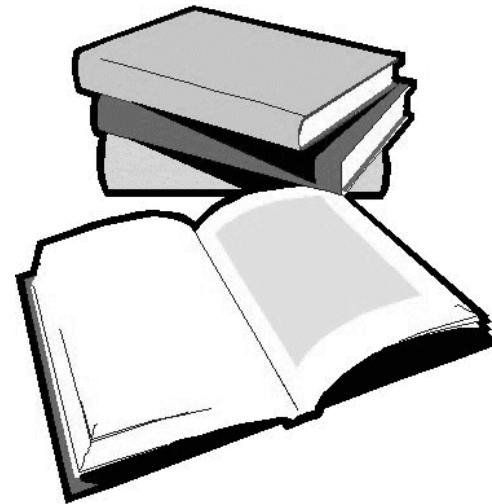
Thermal → Fluid → Mechanical → Electrical



# Sustainable Energy Systems

## SDSU Engineering Class

- Intro
- Theory
- History
- Design
- Resource Assessment
- Project Development
- Policy



# SD WFS

- Manage 11+ WFS\* Projects
  - Aberdeen, Dakota Valley, Douglas, Elkton, Faith, Lake Andes, Sanborn, Selby, Memorial, Yankton ...



# SD WFS

Sanborn Central, Forestburg



MTI, Mitchell Memorial Middle School, Sioux Falls



# # 's

- 11+ Schools
  - 7 installed as of Dec 1, 2009
- 10,500 Students
- 194,000 Community Members



# More Info

<http://wac.sdwind.org>

